

1 **Anthropogenic light disrupts natural light cycles in critical conservation areas**

2
3 *Brett M. Seymoure^{1,2}, Rachel Buxton², Jeremy White¹, Carlos Linares², Kurt Fristrup³, Kevin Crooks²,
4 George Wittemyer², and Lisa Angeloni¹

5
6 ¹Department of Biology, Colorado State University, Fort Collins, CO 80523

7 ²Department of Fish, Wildlife, and Conservation Biology, Colorado State University, Fort Collins, CO
8 80523

9 ³Natural Sounds and Night Skies Division, National Park Service, Fort Collins, CO 80525

10
11 *Corresponding author: brett.seymoure@colostate.edu

12
13 Note: This manuscript is currently in review at a peer reviewed journal and thus the data generated from
14 this work are not publicly available. If interested in the data, please contact Brett Seymoure for options of
15 data sharing.

16
17
18 Anthropogenic lighting drastically alters nocturnal environments, threatening a wide range of
19 species by disrupting light regimes that regulate fundamental biological processes such as reproduction,
20 foraging, and predator defense^{1,2}. We translate satellite measures of anthropogenic light radiating from the
21 earth to a biologically relevant measurement – the amount of light scattered back to the earth (horizontal
22 illuminance). Anthropogenic light exceeding the natural level produced by stars, galactic light, and
23 airglow on a clear moonless night (i.e., new moon conditions) affects 22.9% of the Earth’s terrestrial
24 surface, as well as 51.0% of Key Biodiversity Area units, 77.1% of Global Protected Area units, and
25 approximately 20% of the most biodiverse areas for mammals, birds, and amphibians. Thus, due to
26 anthropogenic sources, these environments experience at least double the levels of natural illuminance
27 during half of the night hours in a year. To facilitate biological interpretation of these levels of
28 anthropogenic illuminance observed globally^{3,4}, we undertook a systematic literature review of animal
29 responses to changing nocturnal light levels. Known biological effects from the current anthropogenic
30 illuminance levels range from behavioral and physiological alterations to increased mortality, which have
31 been documented in 117 species from 23 orders and 8 classes. These findings provide a biological
32 perspective on global light pollution, and they identify regions where reductions in anthropogenic
33 illuminance would yield the greatest benefits for conserving biodiversity.

34 Diel and seasonal light patterns synchronize physiological and behavioral rhythms of most
35 organisms on Earth, regulating fundamental biological processes⁵⁻⁷. Furthermore, animals have evolved
36 diverse visual systems to facilitate optimal behavior under natural light cycles⁸. Humans have
37 substantially altered light environments⁶. Prior studies demonstrated global increases in anthropogenic
38 illuminance within protected areas and high biodiversity areas⁹⁻¹². Yet, the assessment of the scattering of
39 upwelling light back to the Earth's surface, known as skyglow, has been overlooked until recently^{12,13}.
40 Skyglow conceals celestial cues for migratory animals¹⁴ and, as it affects areas that are otherwise distant
41 from anthropogenic disturbances^{12,13,15}, its biological effects can permeate into otherwise well-protected
42 systems¹². Moreover, skyglow has increased faster than global human population for several decades¹⁶.

43 The New World Atlas of Sky Brightness¹³ provides a global map of skyglow, measured as zenith
44 sky luminance. We translated zenith sky luminance into predictions of ground illuminance using a
45 radiance transfer model of skyglow¹⁷ validated with analyses of all sky monitoring data within US
46 National Parks (Methods, Extended Data Fig. 1, Supplemental Data 1). Translating upward radiance
47 measured by satellites into ground illuminance caused by skyglow enables direct connection of the most
48 spatially extensive form of light pollution to extensive studies of photobiology².

49 The lunar cycle is a crucial cue for numerous organisms ranging from corals to bats^{5,18}. Thus, we
50 express anthropogenic ground illuminance in categories of equivalent lunar phases, ranging from new
51 moon to full moon. Lunar illuminance spans four orders of magnitude. We also utilize these orders of
52 magnitude to organize our systematic survey of the photobiology literature. To document levels of
53 anthropogenic exposure, we use ranges that equate to levels of new moon (approx. 0.1 to 1 mlux),
54 (crescent (approx. 1 to 10 mlux), quarter (approx. 10 to 100 mlux), and full (greater than 100 mlux)^{3,19}
55 moon phases (Methods). The most widespread level of anthropogenic illuminance, and our primary focus,
56 is anthropogenic illuminance within new moon levels, thus causing at least a doubling of natural
57 illuminance. Anthropogenic light exposure below new moon levels we designate as minimal.

58 We found that anthropogenic light at night has considerably altered the global nightscape. Our
59 analysis shows 22.9% of terrestrial environments consistently experience anthropogenic new moon

60 illuminance or higher, and 5.5% experience at least perpetual crescent moon illuminance (Fig. 1). To
61 investigate the extent of skyglow in areas important for biodiversity conservation, we analyzed the extent
62 of anthropogenic illuminance for terrestrial land that encompassed the top 25% most biodiverse area for
63 mammals, birds, and amphibians²⁰ (Fig. 2; Methods). Globally, exposure to anthropogenic light at least as
64 bright as anthropogenic new moon levels affected 21.7% of amphibian, 19.1% of bird, and 17.0% of
65 mammal biodiverse areas (Fig. 2). Threatened species²⁰ experienced greater exposure to anthropogenic
66 illuminance, with threatened amphibians, birds, and mammals exposed to at least anthropogenic new
67 moon conditions in 37.5%, 24.9%, and 23.9% of their biodiverse areas, respectively (Fig. 2). Amphibian
68 species, which are primarily (93%) active at night and frequently (32%) threatened with extinction²¹, were
69 exposed to the highest levels, with 5.8% (6.9% threatened) of their biodiverse areas at anthropogenic
70 crescent moon levels or higher (Fig. 2A). At least 1000 km² of biodiverse areas for mammals, birds, and
71 amphibians experienced continuous anthropogenic full moon illuminance or greater, a level that occurs in
72 less than 5% of natural nighttime hours (Fig. 2). Thus, species of concern have large areas affected by
73 skyglow, with potentially adverse effects for persistence and recovery.

74 We also assessed the extent of artificial illuminance in important terrestrial and marine
75 conservation areas using Key Biodiversity Areas (KBAs)²² and the World Databases on Global Protected
76 Areas (GPAs)²³. We extracted median illuminance within each KBA and GPA unit and found that 51.0%
77 of KBA units and 77.1% of GPA units had anthropogenic illuminance at or above new moon (Fig. 3A-B,
78 Extended Data Fig. 2). Many areas had even greater exposure, with 17.0% of KBA units and 32.8% of
79 GPA units having median anthropogenic illuminance as least as bright as crescent moon. The largest
80 KBAs and GPAs had minimal anthropogenic illuminance, and thus only 6.1% of total KBA area (Fig.
81 3A) and 9.0% of total GPA area (Fig. 3B) had anthropogenic illuminance at new moon or brighter
82 (Supplemental Data 2 and 3). Terrestrial KBAs and GPAs had more exposure than their marine
83 counterparts (Extended Data Fig. 2). 53.5% and 77.5% of terrestrial KBA and GPA units, respectively,
84 experienced at least anthropogenic new moon illuminance, compared to 39.9% and 54.2% of marine
85 KBA and GPA units, respectively. Likewise, 16.4% and 13.8% of the total area of terrestrial KBAs and

86 GPAs experienced at least anthropogenic new moon illuminance, compared to 5.3% and 1.9% of marine
87 KBAs and GPAs (Extended Data Fig. 2).

88 Anthropogenic illuminance in KBAs varied with geographic region, with the greatest illuminance
89 in Europe (~60% of area experiencing anthropogenic illuminance at new moon levels or higher) and the
90 Middle East (~43%; Fig 3C). The lowest anthropogenic illuminance was in marine KBAs (100% of area
91 at minimal levels), Oceania (99.9% of area at minimal levels), and Australasia (98.8% of area at minimal
92 levels) (Fig. 3C). Note that although we report no anthropogenic illuminance in the strictly designated
93 marine KBA region, other KBAs include marine area and were exposed to anthropogenic illuminance
94 along or near shorelines (Fig. 1, Extended Data Fig. 2), which are sensitive areas for coastal species like
95 shorebirds, sea turtles, fishes, and corals¹⁸.

96 The biomes of GPAs differ in topography, aridity, precipitation, and vegetation structure, which
97 can affect exposure to skyglow^{24,25}. Amongst the 16 terrestrial biomes, Mediterranean chaparral, which is
98 one of the most densely populated biomes²⁶, had the highest proportion of GPA area experiencing
99 anthropogenic illuminance at new moon levels or higher (64%) (Fig. 3D). Much of the Mediterranean
100 biome is coastal, where severe consequences from anthropogenic light have been documented for marine
101 biota¹⁸. Except for aquatic and ice biomes, all had a proportion of GPA area experiencing anthropogenic
102 quarter moon lighting or higher, with temperate broad leaf forests having the most area (0.2% of area) and
103 tundra having the least area with anthropogenic quarter moon exposure (less than 0.0001% of area) (Fig.
104 3D). The aquatic biome experienced anthropogenic crescent moon in 0.2% of area, and ice was the only
105 biome with all of its GPA area experiencing minimal anthropogenic lighting (Fig. 3D).

106 Anthropogenic illuminance in GPAs also varied with IUCN designation²³. Both wilderness areas
107 (IA) and protected areas with sustainable use of resources (VI) had the smallest proportion of area
108 illuminated at or above new moon levels (2.8% and 2.4%, respectively), whereas protected landscapes
109 and seascapes (V) had the largest proportion of area illuminated at these levels (17.3%; Extended Data
110 Fig. 3A). GPAs with all other designations had less than 10% of their area illuminated at or above
111 anthropogenic new moon levels. Both tropical and polar GPAs had some area exposed to anthropogenic

112 new moon illuminance or greater (3.6% and 2.0% of area, respectively), whereas temperate GPAs had
113 greater exposure, with 19.0% of the area experiencing at least anthropogenic new moon conditions and
114 over 3% experiencing at least crescent moon conditions (Extended Data Fig. 3B).

115 To interpret the biological importance of these global levels of exposure to anthropogenic
116 illuminance, we conducted a systematic literature review of organismal responses to light at night
117 (Methods). We compiled results from studies examining the effects of illuminance levels up to nautical
118 twilight, which exceeds the brightest full moon conditions, spanning the anthropogenic illuminance levels
119 we observed across the globe (Methods). We found studies demonstrating effects of light at night on 117
120 species from 23 orders across 8 classes of both arthropods and chordates (Fig. 4A). These studies showed
121 that changes in light levels affected foraging, movement, activity patterns, vigilance, mating and
122 reproduction, community and population metrics, predation and mortality, physiology and development,
123 and vocal behavior (Fig. 4B, Extended Data Table 1). Although the studies were not evenly distributed
124 across light levels, impacts were demonstrated across the range of illuminance, with 77 species affected
125 by levels between full moon and nautical twilight illuminance (between 100 mlux and 3,000 mlux), 25
126 species affected by illuminance between quarter and full moon levels (between 10 and 100 mlux), and 18
127 species affected by levels between crescent and quarter moon illuminance (between 1 and 10 mlux).
128 Twenty-eight species altered their activity patterns, foraging, and vigilance at light levels in our new
129 moon category (<1 mlux), with five cases of elevated mortality for prey species (Supplemental Data 5).
130 For example, new moon levels initiate foraging in tropical sweat bees²⁷ and stimulate courtship displays
131 in fireflies²⁷. Crescent moon levels alter circadian rhythms in hamsters²⁸. Quarter moon and brighter
132 levels alter numerous predator-prey interactions in invertebrates and vertebrates²⁹ (Fig. 4, Supplemental
133 Table 1). Although the literature on the effects of anthropogenic light is not comprehensive, the
134 taxonomic and ecological breadth of impacts reflects the importance of light at night. Anthropogenic light
135 at night impacts numerous and critical nocturnal behaviors, physiological processes, and community
136 interactions.

137 Our literature review revealed a wide range of effects of nighttime light on a diversity of animal
138 taxa. Pervasive exposures to anthropogenic illuminance at levels known to alter biological processes
139 constitutes a substantial threat to protected natural areas. Skyglow is an unintended consequence of
140 lighting. Skyglow can be meaningfully reduced and community lighting objectives can also be achieved
141 through improvements in design and use of emerging technologies. Solid state lighting and advanced
142 lighting controls can deliver reduced costs, energy usage, and greenhouse gas emissions^{16,30}. Reimagining
143 lighting implementations with advanced technology can enhance human communities at night and
144 substantially diminish a global, chronic stressor to ecosystems.

145

146 **Data Availability**

147 All data will be accessible to the public via CSU library once the manuscript is published.

148

149 **Acknowledgements**

150 This research was funded through a partnership with the Natural Sounds and Night Skies Division
151 (NSNSD) of the US National Park Service. We appreciate the expert advice and data sharing of the
152 NSNSD, especially discussions with Dan Duriscoe and Sharolyn Anderson. Tessa Parrish, Alynn Karnes,
153 and Danny Irwin contributed to data collection for the literature review. All sky monitoring data were
154 collected by NSNSD, and we thank Dan Duriscoe, Chad Moore, Bob Meadows, and Davyd Betchkal for
155 their measurements.

156

157 **Author Information**

158 **Contributions:** B.M.S., R.B., and J.M.W. designed the research with contributions from G.W., K.C.,
159 L.A., K.F., and C.R.L. B.M.S. and C.R.L. led the literature review; R.B. led the geospatial analysis with
160 contributions from J.M.W.; and J.M.W. led the luminance to illuminance conversion research. B.M.S. led
161 the summary analysis and wrote the manuscript main text with contributions from G.W., K.C., L.A., and

162 K.F.; and B.M.S, J.M.W. and C.R.L. wrote the methods and supplemental information with contributions
163 from R.B., G.W., K.C., L.A., and K.F.

164

165 **Author Information**

166 Reprints and permissions information is available at www.nature.com/reprints. The authors have no
167 interests to declare. Correspondence and requests for materials should be addressed to

168 Brett.Seymoure@gmail.com.

169

170 **Figure Legends**

171 **Figure 1:** Global anthropogenic illuminance map. The anthropogenic illuminance (i.e., light produced
172 only by skyglow) in lux at a resolution of 852 m², excluding south of 60S (mostly Antarctica) and north
173 of 80N (mostly Arctic Ocean) where no anthropogenic light data are available. The anthropogenic light
174 levels include: minimal (<0.1 mlux), New Moon (0.1 to 1 mlux), Crescent Moon (1 to 10 mlux), Quarter
175 Moon (10 to 100 mlux), and Full Moon (greater than 100 mlux). Note that these values measure
176 anthropogenic illuminance and thus are additive to the natural levels experienced by the Earth's surface
177 due to natural sources of light (e.g. starlight, celestial bodies like the Milky Way, airglow, and zodiacal
178 light).

179

180 **Figure 2:** The extent of anthropogenic illuminance in biodiverse areas (the terrestrial land that
181 encompassed the top 25% most speciose area for each taxon). Bars represent the artificially illuminated
182 log area at each light level in biodiverse areas for amphibians (A), birds (B), and mammals (C). Black
183 bars represent all species and grey bars represent IUCN threatened species. Numbers within bars indicate
184 the percentage of area. Areas with minimal illuminance had no anthropogenic lighting or lighting at very
185 low levels (<0.1 mlux).

186

187 **Figure 3:** The extent and levels of anthropogenic illuminance within Key Biodiversity Areas (KBAs) and
188 Global Protected Areas (GPAs). The number and area of terrestrial and marine KBAs (A) and GPAs (B)
189 exposed to each light level. C) The area of KBAs exposed to each level for each region, excluding Arctic
190 regions, which have no anthropogenic light data. D) The area of GPAs exposed to each light level for
191 each terrestrial biome classification. Marine biomes are not included as they are not listed by the IUCN
192 database of Global Protected Areas. For A and B, numbers within open bars represent the percentage of
193 units, and numbers within gray bars represent the percentage of area at each light level. For C and D, bars
194 are shaded relative to light level. For D, we abbreviated the IUCN terrestrial biome categories for
195 graphical legibility. Taiga represents taiga and boreal forests; Desert includes xeric shrublands; Savanna
196 includes flooded grasslands; Aquatic represents inland water; Chaparral represents Mediterranean forests,
197 woodlands and scrub; Mt. Shrub represents montane grassland and shrublands; Ice represents rock and
198 ice; Temp Mixed includes temperate broadleaf and mixed forests; Temp Conifer represents temperate
199 conifer forest; Temp Grass includes temperate grasslands, savannas, and shrublands; Trop Conifer
200 includes tropical and subtropical coniferous forest; Trop Dry includes tropical and subtropical dry
201 broadleaf forests; Trop Grass includes tropical and subtropical grasslands, savannas and shrublands; Trop
202 Forest includes tropical and subtropical moist broadleaf forests.

203

204 **Figure 4:** The number of animal species affected and biological responses to different nighttime light
205 levels consolidated from our review of published literature. A) Number of species shown to be affected
206 by each light category. The taxonomic icons represent classes of animals for which studies have been
207 conducted within each light level. B) Number of species found to exhibit each biological effect at each
208 light level. The light levels range from less than 1 to 3,000 mlux, which are the natural night levels that
209 organisms experience. The darkest levels are equivalent to new moon conditions and the brightest levels
210 are equivalent to nautical twilight, which exceeds the brightest full moon conditions.

211

212 **Extended Data Table 1:** Biological consequences of light levels on taxonomic orders from our review of
213 published literature. The mlux values indicate the range of light for each category. An order's name
214 represents at least one study demonstrating an effect of that light level on an organism within that order,
215 but there may be more than one species or study per order; see supplemental data 1 for species and
216 citations. Further, we include the equivalent natural night lighting conditions.

217
218 **Extended Data Figure 1:** The relationship between zenith sky luminance and horizontal illuminance as
219 measured within 279 National Park Sites. The zenith luminance is the brightness of the sky zenith under
220 clear conditions and the horizontal illuminance is the amount of light from the hemisphere. Both values
221 are in their respective photometric units. Zenith sky luminance is what was reported by Falchi et al.
222 (2016) and horizontal illuminance is what we report here. The equation of best fit shows a constant of
223 6.66, which is close to the upper bounds of the constant reported by Kocifaj (2014) of 2π and thus we
224 used 2π as the constant to convert the reported zenith sky brightness of the New World Atlas to horizontal
225 illuminance.

226
227 **Extended Data Figure 2.** The extent and levels of anthropogenic illuminance within Key Biodiversity
228 Areas (KBA) and Global Protected Areas (GPA) by marine and terrestrial classification. The number and
229 area of terrestrial GPAs (A), marine GPAs (B), terrestrial KBAs (C), and marine KBAs (D) exposed to
230 each light level. Numbers within open bars represent the percentage of units and numbers within gray
231 bars represent the percentage of area for each light level.

232
233 **Extended Data Figure 3.** A) Area of Global Protected Areas (GPAs) exposed to each level of
234 anthropogenic illuminance for each International Union for Conservation of Nature (IUCN) category (IA
235 Strict Nature Reserves, IB Wilderness Areas, II National Parks, III Natural Monuments or Features, IV
236 Habitat/Species Management Areas, V Protected Land and Seascapes, VI Protected Areas with

237 Sustainable Use of Resources). B) Area of polar, temperate and tropical GPAs exposed to each level of
238 anthropogenic illuminance. Numbers within bars represent the percentage of area at each light level. For
239 both A and B, marine and terrestrial units were included.

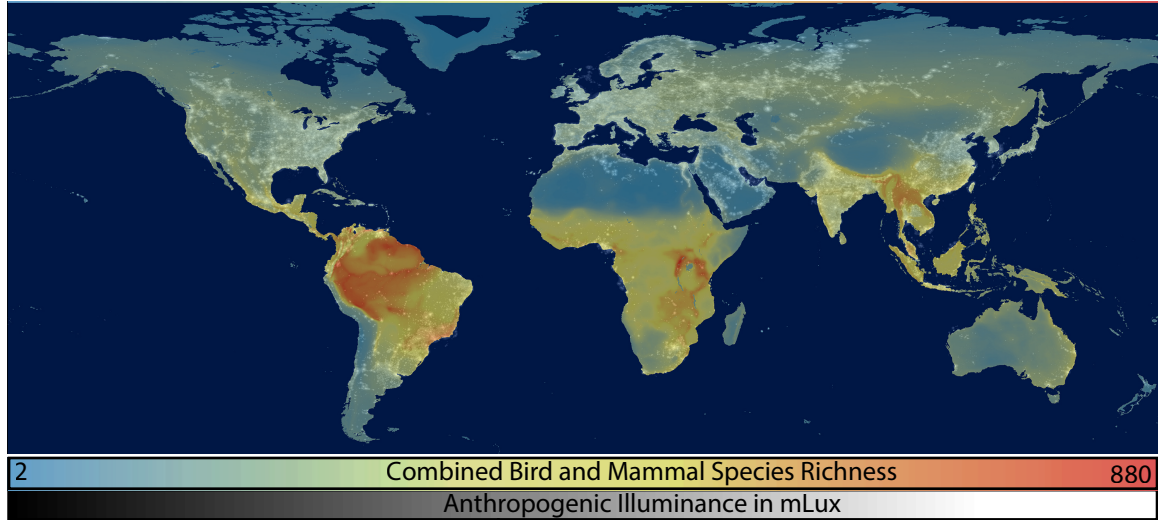
240

241

242 Citations

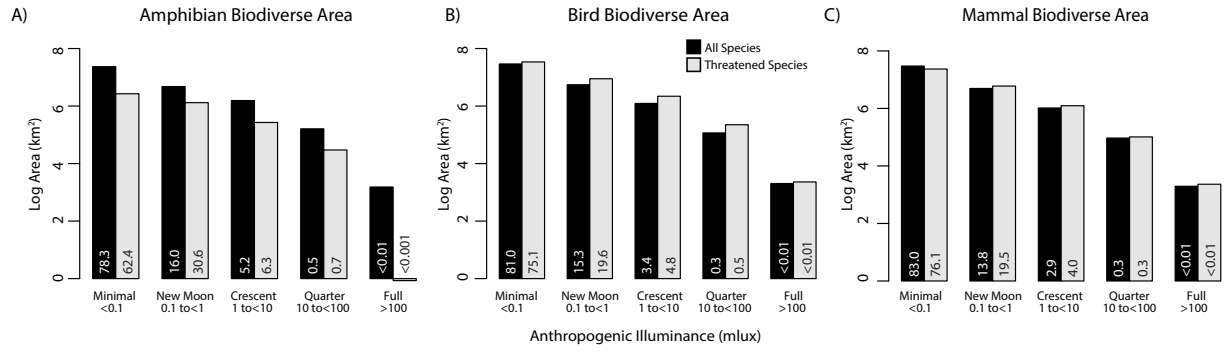
- 243 1. Davies, T. W. & Smyth, T. Why artificial light at night should be a focus for global change
244 research in the 21st century. *Glob. Chang. Biol.* 1–11 (2017). doi:10.1111/gcb.13927
- 245 2. Gaston, K. J., Bennie, J., Davies, T. W. & Hopkins, J. The ecological impacts of nighttime light
246 pollution: A mechanistic appraisal. *Biol. Rev.* **88**, 912–927 (2013).
- 247 3. Longcore, T. & Rich, C. *Ecological light pollution*. (Island Press, 2004).
- 248 4. Gaston, K. J., Visser, M. E. & Hölker, F. The biological impacts of artificial light at night: the
249 research challenge. *Philos. Trans. R. Soc. Lond. B. Biol. Sci.* **370**, 20140133- (2015).
- 250 5. Gaston, K. J., Davies, T. W., Nedelec, S. L. & Holt, L. A. Impacts of Artificial Light at Night on
251 Biological Timings. *Annu. Rev. Ecol. Evol. Syst.* **48**, 49–68 (2017).
- 252 6. Gaston, K. J., Duffy, J. P., Gaston, S., Bennie, J. & Davies, T. W. Human alteration of natural
253 light cycles: causes and ecological consequences. *Oecologia* **176**, 917–931 (2014).
- 254 7. Dominoni, D. The effects of light pollution on biological rhythms of birds: an integrated,
255 mechanistic perspective. *J. Ornithol.* **156**, 409–418 (2015).
- 256 8. Land, M. F. & Nilsson, D. E. *Animal Eyes*. (Oxford University Press, 2012).
- 257 9. Gaston, K. J., Duffy, J. P. & Bennie, J. Quantifying the erosion of natural darkness in the global
258 protected area system. *Conserv. Biol.* **29**, 1132–1141 (2015).
- 259 10. Guetté, A., Godet, L., Juigner, M. & Robin, M. Worldwide increase in Artificial Light At Night
260 around protected areas and within biodiversity hotspots. *Biol. Conserv.* **223**, 97–103 (2018).
- 261 11. Koen, E. L., Minnaar, C., Roever, C. L. & Boyles, J. G. Emerging threat of the 21st century
262 lightscape to global biodiversity. *Glob. Chang. Biol.* (2018). doi:10.1111/gcb.14146
- 263 12. Garrett, J. K., Donald, P. F. & Gaston, K. J. Skyglow extends into the world ' s Key Biodiversity
264 Areas. *Anim. Conserv.* (2019). doi:10.1111/acv.12480
- 265 13. Falchi, F. *et al.* The new world atlas of artificial night sky brightness. *Sci. Adv.* **2**, 1–26 (2016).
- 266 14. Warrant, E. & Dacke, M. Vision and visual navigation in nocturnal insects. *Annu. Rev. Entomol.*
267 **56**, 239–254 (2011).
- 268 15. Kyba, C. C. M. *et al.* Corrigendum: Worldwide variations in artificial skyglow. *Sci. Rep.* **5**, 8409
269 (2015).
- 270 16. Kyba, C. C. M. *et al.* Artificially lit surface of Earth at night increasing in radiance and extent. *Sci.*
271 *Adv* **3**, 1–9 (2017).
- 272 17. Kocifaj, M., Posch, T. & Solano Lamphar, H. A. On the relation between zenith sky brightness
273 and horizontal illuminance. *Mon. Not. R. Astron. Soc.* **446**, 2895–2901 (2014).
- 274 18. Davies, T. W., Duffy, J. P., Bennie, J. & Gaston, K. J. The nature, extent, and ecological
275 implications of marine light pollution. *Front. Ecol. Environ.* **12**, 347–355 (2014).
- 276 19. Duriscoe, D. M. Photometric indicators of visual night sky quality derived from all-sky brightness
277 maps. *J. Quant. Spectrosc. Radiat. Transf.* 1–13 (2016). doi:10.1016/j.jqsrt.2016.02.022
- 278 20. Jenkins, C. N., Pimm, S. L. & Joppa, L. N. Global patterns of terrestrial vertebrate diversity and
279 conservation. *Proc. Natl. Acad. Sci.* **110**, E2602–E2610 (2013).
- 280 21. Ceballos, G., Ehrlich, P. R. & Dirzo, R. Biological annihilation via the ongoing sixth mass
281 extinction signaled by vertebrate population losses and declines. 6089–6096 (2017).
282 doi:10.1073/pnas.1704949114
- 283 22. World Database of Key Biodiversity Areas.
- 284 23. IUCN. World Database on Protected Areas. (2016).

- 285 24. Endler, J. A. The color of light in forests and its implications. *Ecol. Monogr.* **63**, 1–27 (1993).
286 25. Atkins, J. W., Fahey, R. T., Hardiman, B. S. & Gough, C. M. Forest Canopy Structural
287 Complexity and Light Absorption Relationships at the Subcontinental Scale. *J. Geophys. Res.*
288 *Biogeosciences* **123**, 1387–1405 (2018).
289 26. Bennie, J., Duffy, J. P., Davies, T. W., Correa-Cano, M. E. & Gaston, K. J. Global trends in
290 exposure to light pollution in natural terrestrial ecosystems. *Remote Sens.* **7**, 2715–2730 (2015).
291 27. Owens, A. C. S. & Lewis, S. M. The impact of artificial light at night on nocturnal insects : A
292 review and synthesis. *Ecol. Evol.* 1–22 (2018). doi:10.1002/ece3.4557
293 28. Evans, J. A., Elliott, J. A. & Gorman, M. R. Circadian Effects of Light No Brighter Than
294 Moonlight. *J. Biol. Rhythms* **22**, 356–367 (2007).
295 29. Lang, A. B., Kalko, Æ. E. K. V & Bockholdt, Æ. C. Activity levels of bats and katydids in relation
296 to the lunar cycle. 659–666 (2006). doi:10.1007/s00442-005-0131-3
297 30. Wishaw, K. *The Problems of Artificial Light at Night, is a Solution at Hand?* (2017).
298
299



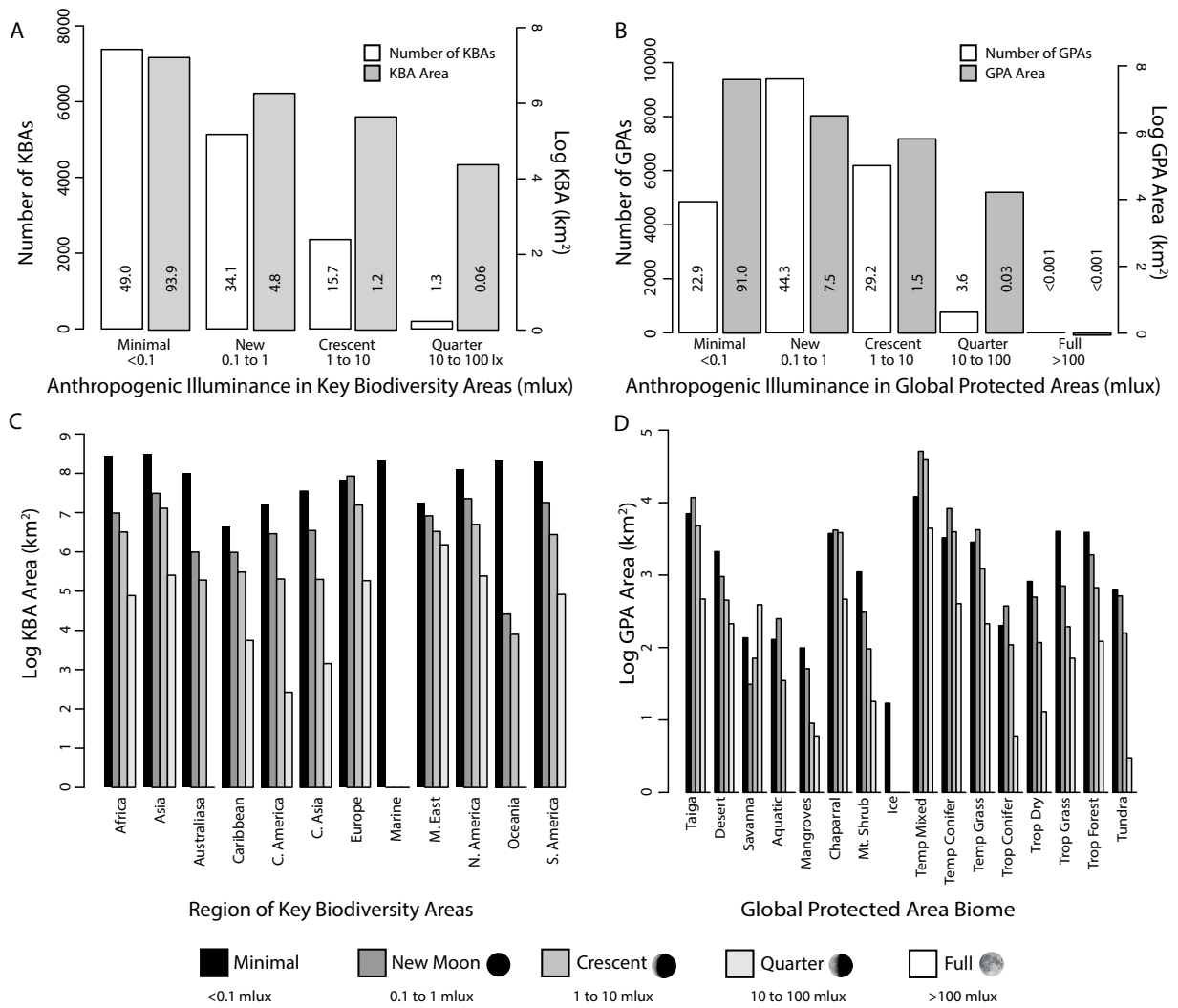
300
301
302

Figure 1.



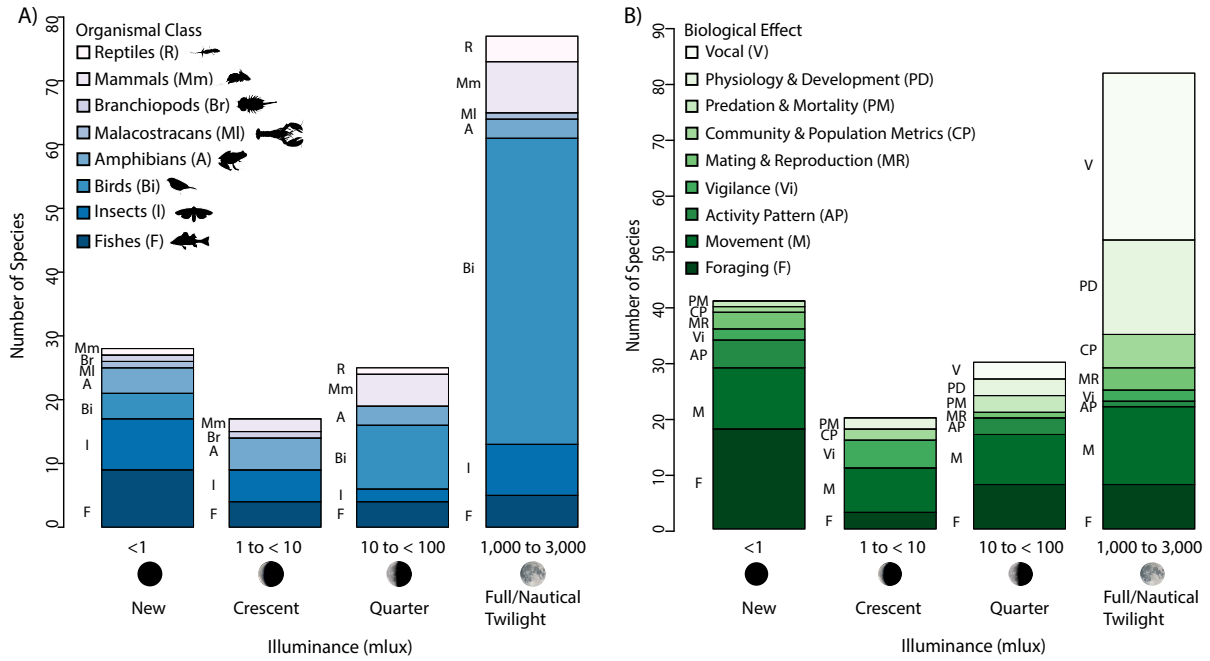
303
304
305

Figure 2.



306
307
308

Figure 3.



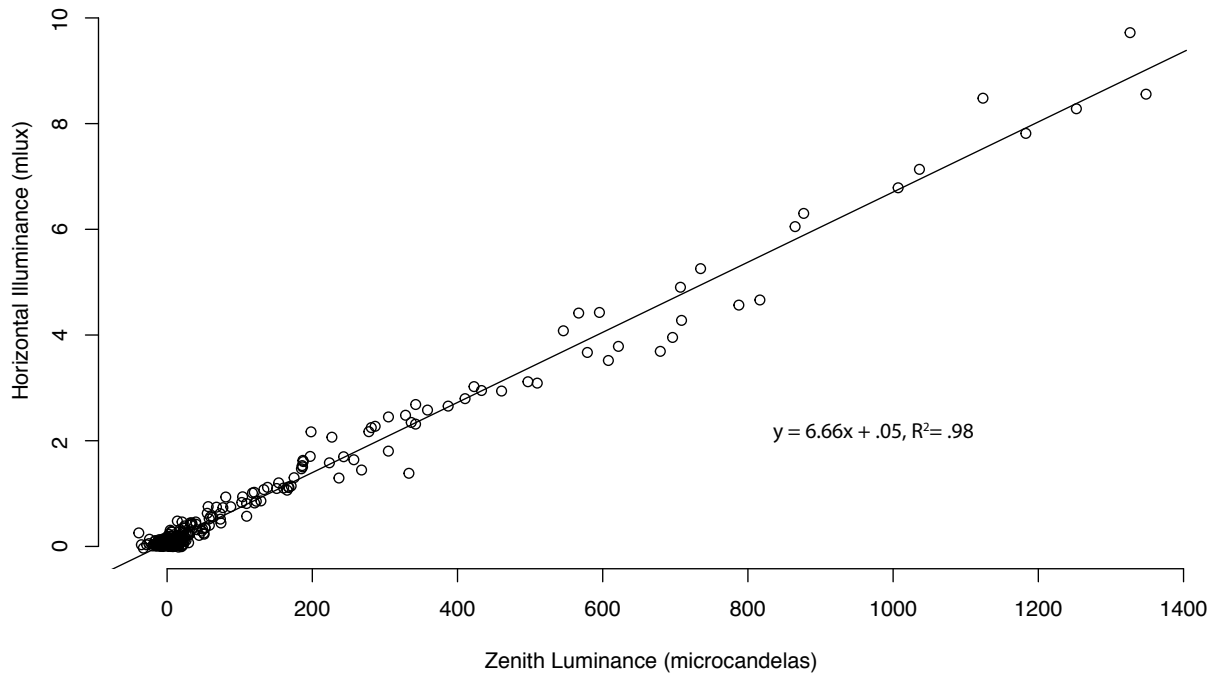
309
310
311

Figure 4.

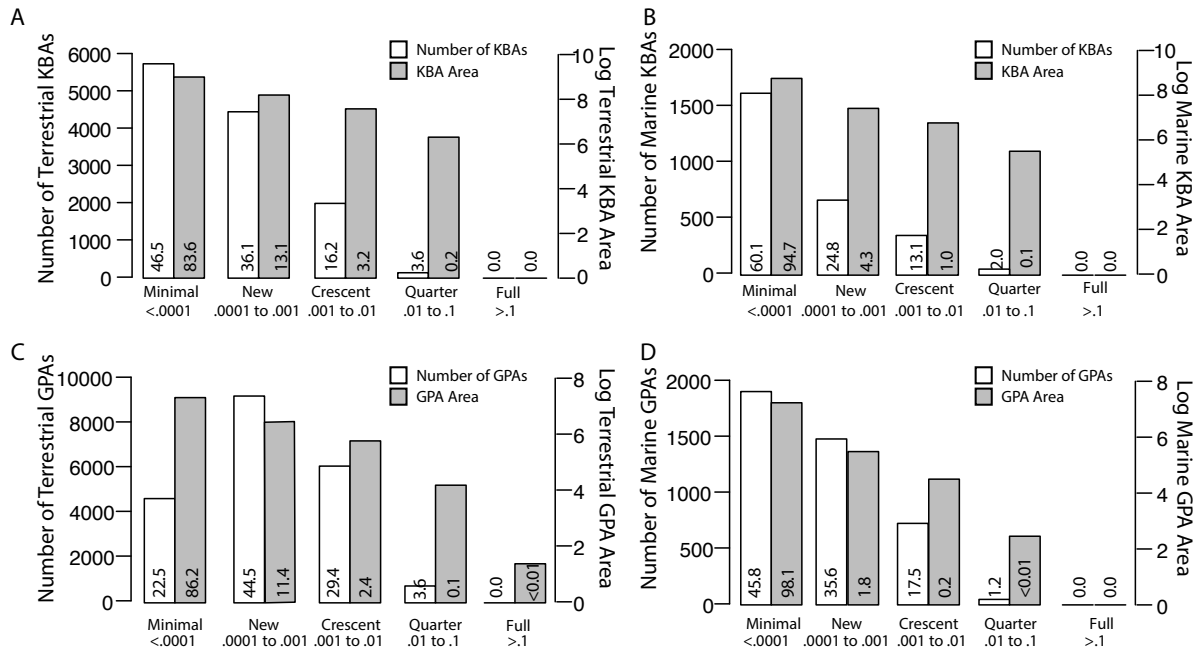
mlux	Ecological Consequences								
	Natural Lighting Conditions	Activity Pattern	Foraging	Movement	Physiological	Vocal	Predation/Vigilance	Mating/Reproduction	Community/Population Metrics
3,000	Nautical Twilight	Anura	Strigiformes Passeriformes Rodentia Squamata Charadriiformes	Salmoniformes Diptera Osmeriformes Passeriformes Squamata Ephemeroptera Rodentia Strigiformes Amphipoda	Perciformes Passeriformes Passeriformes Primates Galliformes Diptera	Passeriformes	Anura Galliformes	Lepidoptera Diptera	Dipterodontia Squamata Lepidoptera Anura
1,000	Full Moon	Anura Rodentia	Strigiformes Anura Salmoniformes Diptera Passeriformes Perciformes	Diptera Rodentia Anura Passeriformes Squamata	Passeriformes	Passeriformes Galliformes	Rodentia	Passeriformes Coleoptera	Ephemeroptera Trichoptera Diptera
100	Quarter Moon		Cypriniformes Salmoniformes	Anura Salmoniformes Clupeiformes Cladocera	Rodentia		Anura		Trichoptera Coleoptera Diptera
10	Crescent Moon	Ephemeroptera Hymenoptera Plecoptera	Strigiformes Anura Salmoniformes Hymenoptera Cypriniformes	Ephemeroptera Hymenoptera Plecoptera			Anostraca	Coleoptera	Anostraca
1	New Moon	Hymenoptera Ephemeroptera	Strigiformes Salmoniformes Esociformes Osmeriformes Cypriniformes Hymenoptera	Anura Mysida Diptera Ephemeroptera Hymenoptera			Anura		

312
313
314

Extended Data Table 1.

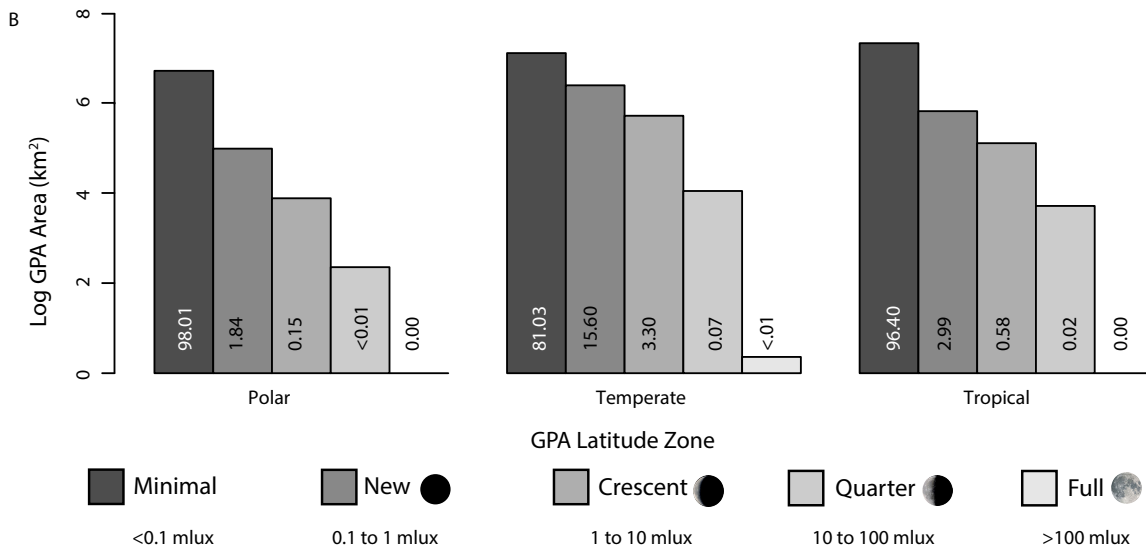
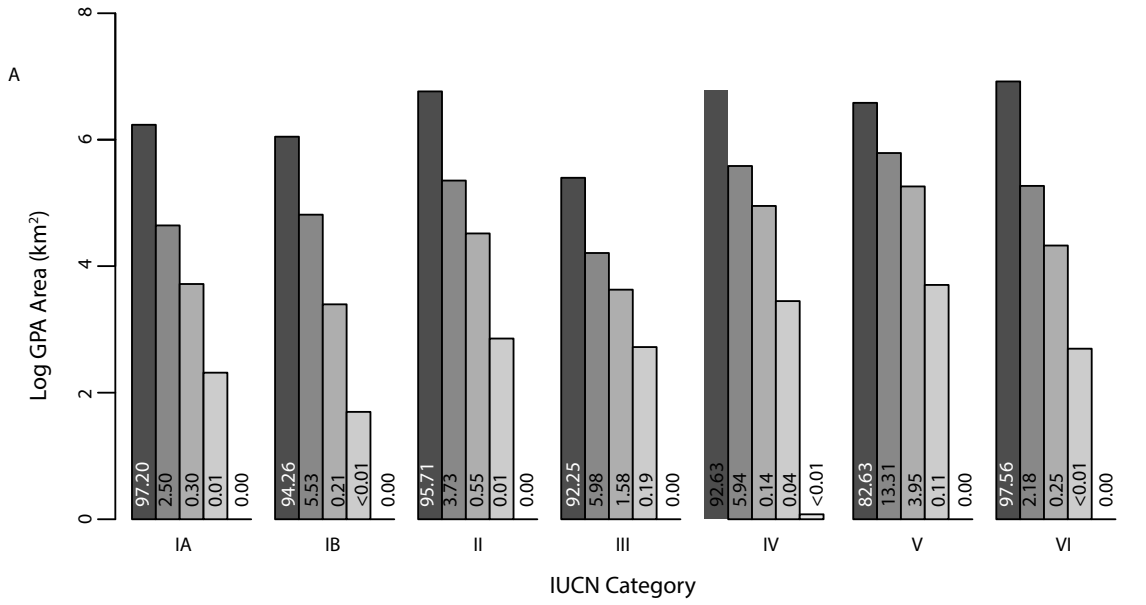


315
316 **Extended Data Figure 1.**
317



Extended Data Figure 2.

318
319
320



321
322

Extended Data Figure 3.

1 **Methods**

2

3 Note: This work is currently under review at peer reviewed journals and thus the data sets are not
4 currently publicly available. If interested in data sharing, please contact Brett Seymoure for
5 options.

6

7 ***Conversion of New World Atlas to Horizontal Illuminance***

8 This paper is distinguished from prior studies of light pollution and ecosystems¹⁻⁶ by
9 translating higher quality satellite data into illuminance values that are relevant to organisms in
10 their environments and with units that are compatible with natural cycles of lunar illuminance. In
11 addition, this is the second work that accounts for the spread of light from cities in the form of
12 skyglow and its projection into conservation areas⁶. These advances result from our use of New
13 World Atlas of Light Pollution as our global model of light pollution⁷. The satellite data used for
14 the atlas has nearly seven-fold greater spatial resolution and 256-fold greater dynamic range than
15 the data used for previous studies^{1-5,7,8}. In addition, the atlas incorporates radiance transfer
16 models to account skyglow⁷.

17 The New World Atlas described the global extent of anthropogenic luminance at zenith
18 (i.e., directly overhead). This metric has limited function when discussing impacts to animals as
19 many taxa perceive the illuminance of their environment rather than sky brightness⁹. Horizontal
20 illuminance, the collective light illuminating a horizontal surface is a more informative metric as
21 it takes into account light from all zenith angles¹⁰. We converted the New World Atlas of
22 artificial night sky brightness (VIIRS data set) from luminance in candelas per square meter to
23 illuminance in mlux, which is more appropriate for understanding lighting effects on wildlife⁹⁻¹¹.
24 By using mlux, we were able to include biologically relevant light intensities for several
25 taxonomic groups of concern revealing natural areas that are anthropogenically illuminated.

26 Kocifaj et al. (2014) described methods to convert existing zenith luminance to horizontal
27 illuminance based on three idealized atmospheric conditions: homogeneous sky brightness, an
28 isotropically scattering atmosphere, and a stratified turbid atmosphere, with a stated goal of
29 finding a relationship between zenith sky brightness and horizontal illuminance within an order
30 of magnitude¹². They concluded that a relationship based on models of a stratified turbid
31 atmosphere was most realistic and derived an upper and lower conversion factor of: $\pi/1.39$ and
32 2π .

33 We used a simplified global conversion of artificial zenith sky luminance to artificial
34 horizontal illuminance based on the analytical extension of an exponentially stratified
35 atmosphere presented by Kocifaj et al. (2014). The simple formula:

$$36 \quad D = 2\pi B_0$$

37 is used, where D is horizontal illuminance, and B is sky luminance at zenith angle 0 degrees. As
38 further validation of this simplified conversion, we analyzed calibrated CCD measures of
39 coincident zenith sky brightness and horizontal illuminance from the all sky monitoring dataset
40 from the US National Park Service Night Sky Program^{13,14} (Supplemental Fig. 1, accessible at
41 <https://www.nps.gov/subjects/night skies/skymap.htm>). Two hundred seventy-nine datasets were
42 analyzed using linear regression to investigate the relationship of zenith luminance and
43 horizontal illuminance, resulting in the formula:

$$44 \quad D = 6.6 * B_0 + 0.05$$

45 where horizontal illumination is reported in millilux and zenith luminance is reported in
46 microcandelas per meter². The corresponding R² value was 0.98 (Supplemental Fig. 1). These
47 results roughly align with the upper bound of 2π found by Kocifaj et al. (2014), as well as that of
48 Garstang (1986)^{12,15}.

49 Our analysis is subject to 4 caveats. First, we converted zenith sky luminance
50 measurements to horizontal illuminance, thus the exact value may be subject to error especially
51 in remote areas. Second, we measured illuminance from skyglow and not from direct sources,
52 thus certain areas may be brighter due to electric lighting that is shielded from the sky and thus
53 not contributing directly to skyglow. Third, the VIIRS DNB values are biased towards longer
54 wavelengths of light (i.e. yellow and red) and underestimate short wavelengths (i.e. blue
55 light)^{7,16,17}. This is an issue for all artificial light research using satellite data, particularly as short
56 wavelength dominant lights (LEDs) become more common¹⁶. Thus, the values here are likely to
57 underestimate anthropogenic illuminance, since short wavelengths of light contribute more to
58 skyglow¹⁸. Lastly, our values of horizontal illuminance predict light levels that reach the surface
59 of the Earth (e.g. forest canopy), but may not match light levels that reach the ground, as thick
60 canopy cover can reduce downwelling illuminance by as much as two orders of magnitude^{19,20}.

61

62 *Natural Light Cycle Measurements and Values*

63 The variation in illuminance due to lunar phase spans multiple orders of magnitude^{10,20,21}.
64 In addition, there is variation in reported illuminance values, with previous studies reporting a
65 wide range of values for full moon illuminance spanning less than 100 mlux to greater than 2000
66 mlux²¹⁻²⁴. These discrepancies are due to several factors, including the altitude of the moon, the
67 atmospheric conditions, and latitude²⁰. Greater lunar illuminance results from higher lunar
68 altitude, murkier atmospheric conditions, and latitudes close to the equator^{20,21}. However, very
69 few reports exist on the ambient illuminance from lunar phases other than full moon (but see²⁰).
70 Thus, we collected illuminance data in a near natural location through several lunar cycles to
71 resolve specific levels referred to here.

72 We measured illuminance levels with zenith sky brightness data from a naturally dark
73 portion of Colorado's arid Piceance Basin⁶, at approximately 40° N. The zenith data were
74 collected using Unihedron SQM-L-DL units from October and November 2016, and March and
75 April 2017. The sky brightness measurements were recorded every 5 minutes between 10:00pm
76 and 5:00am, and we limited our analyses to clear nights. Using SunCalc in R²⁵, we grouped
77 values by lunar phase (new moon, crescent, quarter, and full) and lunar altitude (greater than ten
78 degrees above the horizon) resulting in 1,027 light values. We then converted these luminance
79 data to horizontal illumination⁸ and compared our values to published values of lunar
80 illumination^{10,26}. Further, we measured sky brightness on a clear moonless night using a
81 calibrated CCD camera to assess all-sky conditions during the new moon. Our SQM measured
82 values overlapped with those reported in the literature and resulted in the following averages:
83 new moon = 1.0 mlux, quarter moon = 30 mlux, and full moon = 100 mlux. Our [SQM](#) new moon
84 value of 1.0 mlux is likely due to air glow during our measurements as our CCD values were
85 between 0.74 and 0.86 mlux. Thus, we assigned anthropogenic lunar levels as: new moon
86 conditions = 0.1 to 1.0 mlux, crescent moon = 1.0 to 10 mlux, quarter moon = 10 to 100 mlux,
87 full moon > 100 mlux. As we were concerned with understanding how anthropogenic lighting
88 equates to natural night conditions on a global scale and not just one location, we used values
89 that fit within the range of both our measurements and those reported in the literature^{10,21,26,27}.

90

91 *Calculating Illuminance for Global Protected Areas and Key Biodiversity Areas*

92 We paired our measures of artificial horizontal illuminance (mlux) with the World
93 Database on Global Protected Areas (GPA) and World Database on Key Biodiversity Areas
94 (KBA) to assess the extent of artificial horizontal illuminance in the world's protected areas^{21,22}.

95 The spatial extent of the New World Atlas is 80° N to -60° S⁶. Therefore, any GPAs and KBAs
96 outside of this area were removed from the analysis resulting in a total of 211,972 GPAs and
97 14,856 KBAs. We included both marine and terrestrial GPAs and KBAs. For quantification of
98 light level by the International Union for Conservation of Nature (IUCN) management category,
99 only GPA's with defined IUCN categories were used. Those classified as "Not Applicable",
100 "Not Recorded" or "Unavailable" (n=72,230) were removed from the analysis for a total of
101 139,742 GPAs. For each GPA and KBA, we extracted the median illuminance value ± standard
102 deviation, first and third quartiles, coefficient of variation, and proportion of area below each
103 lunar threshold (see Supplemental Data 1 and 2).

104

105 ***Calculating Global Species Richness***

106 Global species richness was calculated for threatened and non-threatened terrestrial birds,
107 mammals and amphibians²⁸. Global 10 km rasters²⁸ were converted to polygon layers based on
108 the distribution of species richness using rank statistics. Polygons with the top 25% of species
109 richness for each taxon (threatened and non-threatened) were overlaid on the horizontal
110 illuminance raster to extract light levels. Within each polygon we calculated summary statistics,
111 including median illuminance ± standard deviation, first and third quartiles, coefficient of
112 variation, and proportion of area below each lunar threshold.

113

114 ***Literature Review on the Effects of Light Levels on Animals***

115 Much research has been conducted to understand the ecological consequences and
116 organismal responses to light at night, both natural and anthropogenic. To compile the previous
117 research, in April of 2018 we conducted a detailed literature search using Thompson's *ISI Web of*

118 *Science* with the following specific search terms: ["Light pollution" and "Artificial Lighting"]
119 AND ["Effects on Animals" or "Effects on Wildlife"]. We also searched using *Google Scholar*
120 with the search terms: “Light pollution” AND “Effects on Animals”; Light pollution’ AND
121 “Effects on Wildlife”; “Artificial Lighting” AND “Effects on Animals”; “Artificial Lighting”
122 AND “Effects on Wildlife”. *Web of Science* delivered 261 publications while *Google Scholar*
123 delivered a total of 467 publications.

124 We reviewed all hits to locate any “effect” from light levels, with an “effect” defined as a
125 statistically significant change in the particular biological metric as a function of light level.
126 Furthermore, if a publication cited work that was not selected by *Web of Science* or *Google*
127 *Scholar*, we added the study to our database. We included data from empirical studies showing a
128 significant biological effect at light levels less than 3,000 mlux (which is approximately the
129 brightest values of both full moon and nautical twilight^{10,26}), resulting in a database of 87 studies.
130 The database included the species, order, class, the experimental setting (e.g. field observation,
131 field experiment, laboratory experiment, etc.), the effect, illuminance (in lux), and citation
132 (Supplemental Data 3, Supplemental Data 4). We categorized biological effects in to: foraging,
133 movement, activity patterns, vigilance, mating and reproduction, community and population
134 biology metrics, predation and mortality, physiology and development, and vocal behavior.
135 Population and community metrics included any effect at the population level or an interaction of
136 more than one species. We consolidated the published literature on animal responses to both
137 natural and artificial lighting to summarize the effects of a range of light levels that we translated
138 to equivalent nighttime conditions, from new moon and darker (<.1 mlux) to nautical twilight
139 (i.e. the sun is 6° to 12° below horizon, which is as bright as 3,000 mlux). We included nautical
140 twilight in the literature review as a more comprehensive approach of understanding the lighting

141 conditions that animals will experience when the sun is below the horizon, although we note that
142 no GPA or KBA had anthropogenic illuminance above 1,000 mlux. Lastly, we presented the
143 literature review by taxonomic class in Figure 4 and for greater taxonomic resolution as order in
144 Extended Data Table 1.

145

146 **Supplemental Data**

147 KBA dataset, Supplemental Data 1

148 GPA dataset, Supplemental Data 2

149 Lit Review Data frame, Supplemental Data 3

150

151 **Methods References**

- 152 1. Gaston, K. J., Duffy, J. P. & Bennie, J. Quantifying the erosion of natural darkness in the global
153 protected area system. *Conserv. Biol.* **29**, 1132–1141 (2015).
- 154 2. Davies, T. W., Duffy, J. P., Bennie, J. & Gaston, K. J. Stemming the Tide of Light Pollution
155 Encroaching into Marine Protected Areas. *Conserv. Lett.* **9**, 164–171 (2016).
- 156 3. Bennie, J., Duffy, J. P., Davies, T. W., Correa-Cano, M. E. & Gaston, K. J. Global trends in
157 exposure to light pollution in natural terrestrial ecosystems. *Remote Sens.* **7**, 2715–2730 (2015).
- 158 4. Guetté, A., Godet, L., Juigner, M. & Robin, M. Worldwide increase in Artificial Light At Night
159 around protected areas and within biodiversity hotspots. *Biol. Conserv.* **223**, 97–103 (2018).
- 160 5. Koen, E. L., Minnaar, C., Roever, C. L. & Boyles, J. G. Emerging threat of the 21st century
161 lightscape to global biodiversity. *Glob. Chang. Biol.* (2018). doi:10.1111/gcb.14146
- 162 6. Garrett, J. K., Donald, P. F. & Gaston, K. J. Skyglow extends into the world ' s Key Biodiversity
163 Areas. *Anim. Conserv.* (2019). doi:10.1111/acv.12480
- 164 7. Falchi, F. *et al.* The new world atlas of artificial night sky brightness. *Sci. Adv.* **2**, 1–26 (2016).
- 165 8. Cinzano, P., Falchi, F. & Elvidge, C. D. The first World Atlas of the artificial night sky brightness.
166 *Mon. Not. R. Astron. Soc.* **707**, 689–707 (2001).
- 167 9. Cronin, T. W., Johnsen, S., Marshall, N. J. & Warrant, E. J. *Visual Ecology*. (Princeton University
168 Press, 2014).
- 169 10. Johnsen, S. *The Optics of Life*. (Princeton University Press, 2012).
- 170 11. Lythgoe, J. N. *The ecology of vision*. (Clarendon Press, 1979).
- 171 12. Kocifaj, M., Posch, T. & Solano Lamphar, H. A. On the relation between zenith sky brightness
172 and horizontal illuminance. *Mon. Not. R. Astron. Soc.* **446**, 2895–2901 (2014).
- 173 13. Duriscoe, D. M., Luginbuhl, C. B. & Moore, C. A. Measuring night-sky brightness with a wide-
174 field CCD camera. *Publ. Astron. Soc. Pacific* **119**, 192–213 (2007).
- 175 14. Duriscoe, D. M. Photometric indicators of visual night sky quality derived from all-sky brightness
176 maps. *J. Quant. Spectrosc. Radiat. Transf.* 1–13 (2016). doi:10.1016/j.jqsrt.2016.02.022
- 177 15. Garstang, R. H. Model for artificial night-sky illumination. *Publ. Astron. Soc. Pacific* **98**, 364–375
178 (1986).
- 179 16. Kyba, C. C. M. *et al.* Artificially lit surface of Earth at night increasing in radiance and extent. *Sci.*
180 *Adv* **3**, 1–9 (2017).
- 181 17. Elvidge, C. D., Oceanic, N., Zhizhin, M. N., Oceanic, N. & Hsu, F. Why VIIRS data are superior
182 to DMSP for mapping nighttime lights. *Proc. Asia-Pacific Adv. Netw.* **35**, 62–69 (2013).
- 183 18. Aube, M. Physical behaviour of anthropogenic light propagation into the nocturnal environment.
184 *Philos. Trans. R. Soc. B* **370**, 20140117 (2015).
- 185 19. Kelber, A. *et al.* Light intensity limits foraging activity in nocturnal and crepuscular bees. *Behav.*

186 *Ecol.* **17**, 63–72 (2005).

187 20. Veilleux, C. C. & Cummings, M. E. Nocturnal light environments and species ecology :
188 implications for nocturnal color vision in forests. *J. Exp. Biol.* **215**, 4085–4096 (2012).

189 21. Kyba, C. How bright is moonlight ? (2017).

190 22. Bruce-White, C. & Shardlow, M. A review of the impact of artificial light on invertebrates. in
191 *Buglife-The Invertebrate Conservation Trust* (2011).

192 23. Yorzinski, J. L. *et al.* Artificial light pollution increases nocturnal vigilance in peahens. *PeerJ* 1–
193 19 (2015). doi:10.7717/peerj.1174

194 24. Todd, J. J., Barakat, B., Tavassoli, A. & Krauss, D. A. The moon’s contribution to nighttime
195 illuminance in different environments. *Proc. Hum. Factors Ergon. Soc.* **2015-Janua**, 1056–1060
196 (2015).

197 25. Team, R. C. R: A language and environment for statistical computing. (2014).

198 26. Bond, D. S. & Henderson, F. P. *The Conquest of Darkness.* **346297**, (1963).

199 27. Todd, J. J., Barakat, B., Tavassoli, A. & Krauss, D. A. The moon’s contribution to nighttime
200 illuminance in different environments. *Proc. Hum. Factors Ergon. Soc.* **59**, 1056–1060 (2015).

201 28. Jenkins, C. N., Pimm, S. L. & Joppa, L. N. Global patterns of terrestrial vertebrate diversity and
202 conservation. *Proc. Natl. Acad. Sci.* **110**, E2602–E2610 (2013).

203